

# NP-C Offers New Home Amid Oaks

With their always-careful attention to detailed quality, Nash Phillips-Copus constructed this Parade home on the corner of Briargrove and Barton Hills Drives, amid a grove of native oaks.

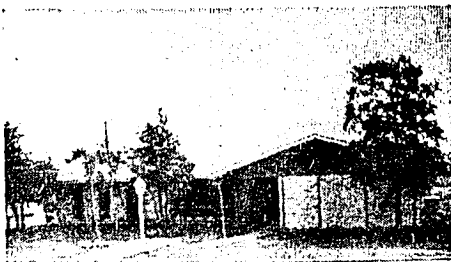
The home's naturally appealing and practical planning was then enhanced by the expert decorating abilities of Leon Peik and furnishings from Louis Shanks of Austin.

Fixed glass positioned in native stone and topped by a luxurious cedar roof give the look of tradition while maintaining the latest in contemporary styling.

The 1952 sq.ft. of living area was planned for maximum luxury and convenience. A large entry hall and a formal living room and dining room just off the completely built-in kitchen (range, oven, dishwasher, disposal) make entertaining a pleasure rather than a task for the young executive's family.

Family living at its best is catered to with the large family room with fireplace and a bookshelf mantle and the separate breakfast area. One of the bedrooms, designed especially for the young, provides peg-board walls positioned on either side of the exposed brick from the back of the family room fireplace. Two closets with a built-in chest between them give extra space for living.

Any woman will appreciate the amount of storage and utility area in this home. A large utility room and a 5'x7' cedar-lined closet are two of those practical touches of luxury



2508 Briargrove Drive by Nash Phillips-Copus



CLYDE COPUS AND NASH PHILLIPS

that Nash Phillips-Copus is so famous for. In addition, there are two closets in the hall and large closets in each of the three bedrooms.

The Master bedroom (19½' long) features a walk-in closet with shoe rack, a mirror and vanity table outside the bathroom.

Two ceramic tile baths, central heat and air, and an enclosed, pre-finished, paneled, double garage complete the highlights of this exciting Nash Phillips-Copus home.